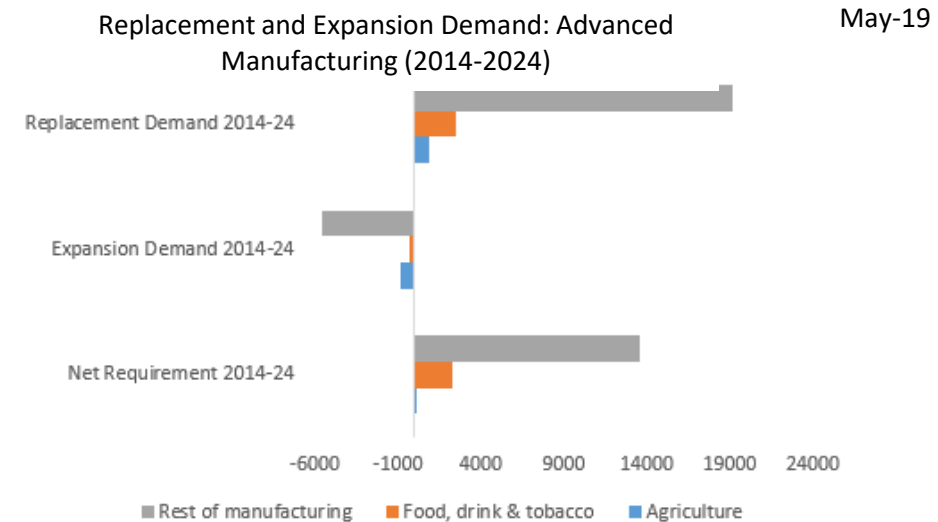
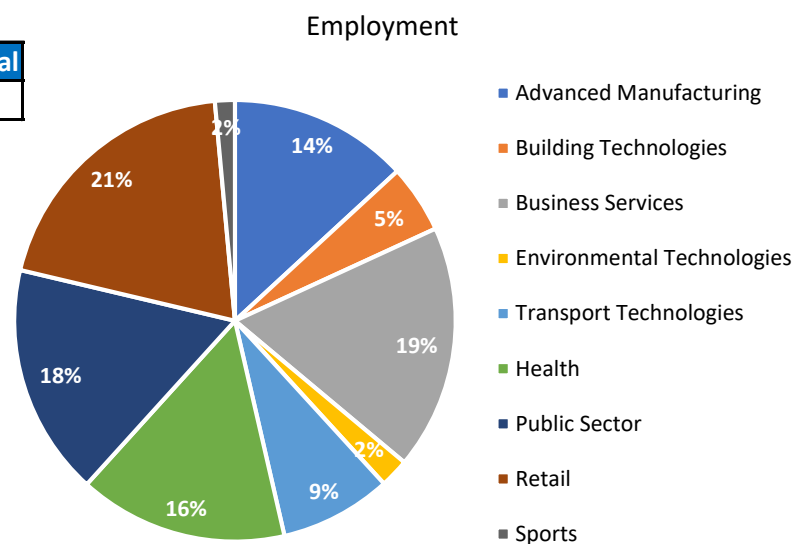
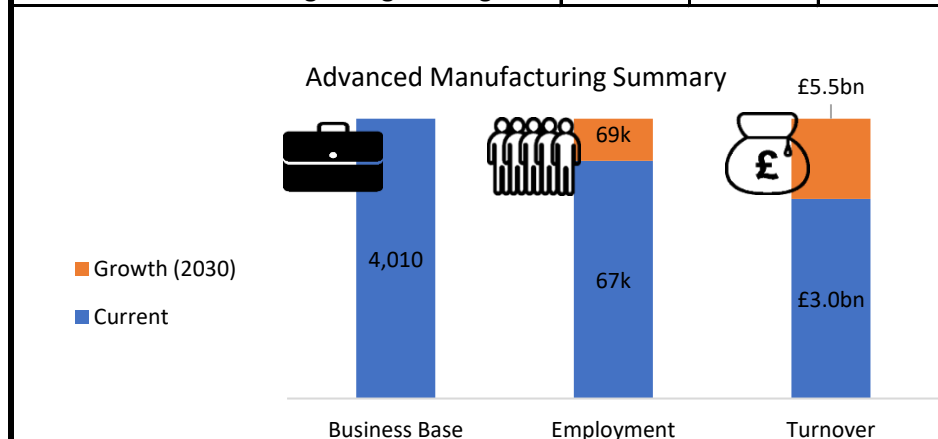


Black Country Sector Dashboard: Advanced Manufacturing

Black Country Skills Factory

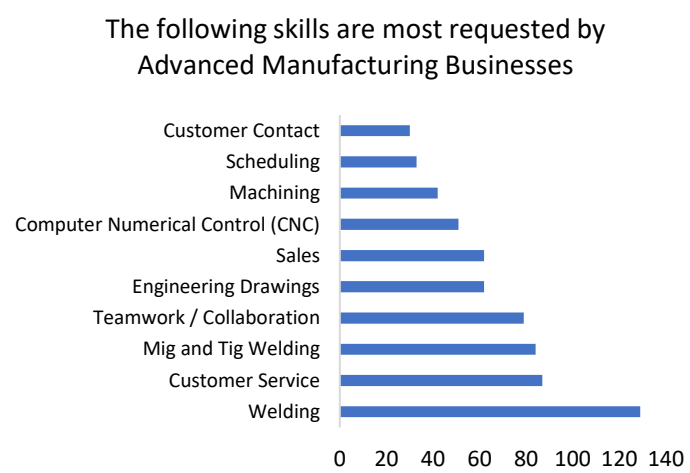
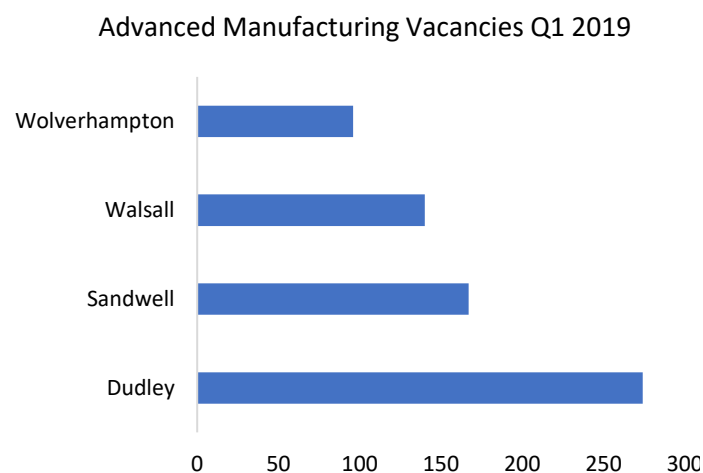
Sector and Trends

Jobs	2015	2016	2017	% of total
Advanced Manufacturing & Engineering	61,875	56,910	58,640	14%

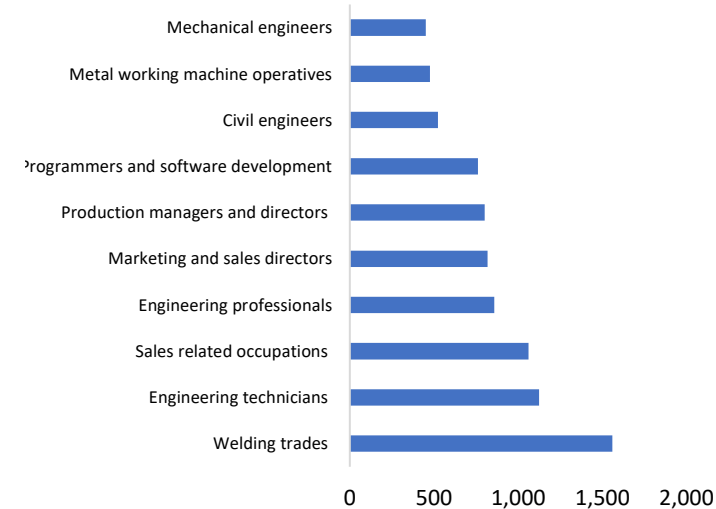


Current Employment Vacancies

Average Salary in this sector is £26,800 in the Black Country

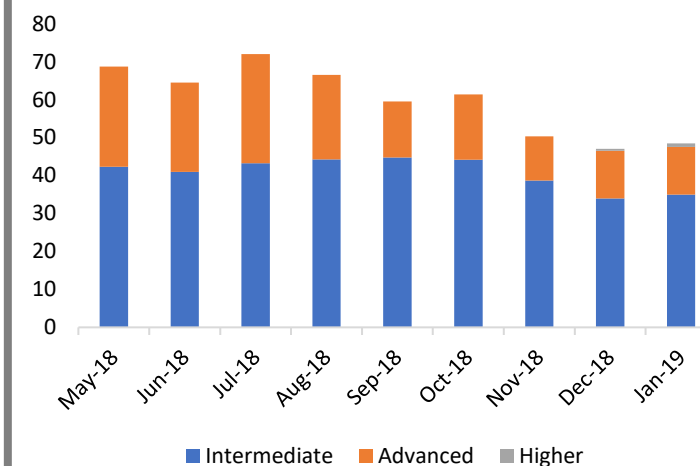


Top 10 Occupational Vacancies



Apprenticeship Vacancies

BC Advanced Manufacturing Vacancies by Level



Future Trends & Developments

Global Industry Trend	Impact on Employment	What to consider at school	Significant Black Country Developments
Automation and Digitisation	Jobs requiring higher level of skills; more use of technology and working with robots	ICT, materials, physics, design & technology, maths	Digital Engineering Skills Centre, Walsall College
3D Printing (Additive Manufacturing)	Jobs requiring different skills: e.g. design/creative skills. More collaborative environments	Design & technology, physics, chemistry, maths, materials, creative subjects	University of Wolverhampton 'Fab Lab'
Electrification (of cars, aircraft, rail)	Different types of skills to traditional car/aircraft manufacturing, with a focus on electrics/batteries	Physics, chemistry, maths, materials, design & technology	Elite Centre for Manufacturing Skills

Advanced Manufacturing & Engineering Strategic Companies List

MARSTON'S PLC	WV1 4JT	Wolverhampton	JBR RECOVERY	B70 9BS	Sandwell
SANDVIK LIMITED	B62 8QZ	Dudley	JBS	B70 8BG	Sandwell
ERIKS INDUSTRIAL SERVICES LIMITED	B62	Dudley	USS LIMITED	B63 3JP	Dudley
K.T.C. (EDIBLES) LIMITED	WS10	Sandwell	UNITED	B63 3JP	Dudley
ZF LEMFORDER UK LIMITED	WS10	Sandwell	INTRALOX	DY6 7FW	Dudley
ARCELORMITTAL DISTRIBUTION	WV13	Wolverhampton	H.L.THORNE &	B69 2PA	Sandwell
ASSA ABLOY LIMITED	WV13	Walsall	HOME ENERGY	WS2 7BN	Walsall
STEEL & ALLOY PROCESSING LIMITED	B70 6BZ	Sandwell	KENNAMETAL	DY6 7NP	Dudley
WILLIAM KING LIMITED	B70 9DR	Sandwell	ASH & LACY	B70 7JJ	Sandwell
MUELLER EUROPE LIMITED	WV14	Wolverhampton	ROBINSON	B70 0AH	Sandwell
B.E. WEDGE HOLDINGS LIMITED	WV13	Walsall	WESTLEY	B64 5QS	Dudley
CASTINGS PUBLIC LIMITED COMPANY	WS8 6JZ	Walsall	MUSGRAVE	B64 5QS	Dudley
HADLEY INDUSTRIES PLC	B66 2PA	Sandwell	BIP (OLDBURY)	B69 4NH	Sandwell
ELTA GROUP LIMITED	DY6 7US	Dudley	PARGAT & CO	B71 4JZ	Sandwell
MERIDIAN METAL TRADING LIMITED	DY2	Dudley	APOLLO	DY2 7DJ	Dudley
SALISBURY POULTRY (MIDLANDS)	WV14	Wolverhampton	PALMER	B64 6PW	Sandwell
VOESTALPINE METSEC PLC	B69 4HF	Sandwell	DIAMOND BOX	B70 0TX	Sandwell
FLINT INK (U.K.) LIMITED	WV1	Wolverhampton	CORTLAND U.K.	WS10 8LQ	Walsall
SHARPS BEDROOMS LIMITED	WV14	Wolverhampton	SHERWOOD	WV10 9TF	Wolverhampton
HADLEY INDUSTRIES HOLDINGS	B66 2PA	Sandwell	CLAMASON	DY6 8XG	Dudley
WEDGE GROUP GALVANIZING LIMITED	WV13	Walsall	THOMAS	DY1 4SJ	Dudley
ACENTA STEEL LIMITED	WV13	Wolverhampton	WEATHERITE	B70 7JE	Sandwell
HICKMAN INDUSTRIES LIMITED	DY5 1UF	Dudley	C N C	WS8 6JZ	Walsall
JOHN COX COLD STORES AND	WS2	Walsall	CORNWALL	B66 2JR	Sandwell
PHILMAR PETROLEUM LIMITED	WS10	Walsall	M.J. SECTIONS	DY2 0JZ	Dudley
PHILMAR (HOLDINGS) LIMITED	WS10	Walsall	DARCAST	B66 2JR	Sandwell
SJF HOLDINGS LIMITED	DY6 7JS	Dudley	TRIPLEFAST	WS10	Walsall
EXOL LUBRICANTS LIMITED	WS10	Walsall	AURUBIS UK	B66 2NN	Sandwell
MARCEGAGLIA (UK) LIMITED	DY2 8TA	Dudley	RICAL LIMITED	B66 1NY	Sandwell
INTEGRATED WATER SERVICES	WS2	Walsall	CORRUGATED	B70 8JF	Sandwell
MAPEI (UK) LIMITED	B62 8HD	Dudley	HYDROBOLT	WS10	Walsall
C. BROWN & SONS (STEEL) LIMITED	DY2 0RL	Dudley	ASHLEY MANOR	DY2 0RL	Dudley
C BROWN SERVICES LIMITED	DY2 0RL	Dudley	KOMFORT	WS10 8LQ	Walsall
MITEK INDUSTRIES LIMITED	DY2	Dudley	H&R	DY4 8EH	Sandwell
SUNRISE MEDICAL LIMITED	DY5 2LD	Dudley	ORIGINAL	B70 7JJ	Sandwell
HS MARSTON AEROSPACE LIMITED	WV10	Wolverhampton	CHAMBERLIN &	WS1 2DU	Walsall
ASH & LACY HOLDINGS LIMITED	B70 7JJ	Sandwell	JERSEYTEX	DY4 0HR	Sandwell
NCH (UK) LIMITED	WV14	Wolverhampton	TIMKEN UK	DY2 8UL	Dudley
THOMAS DUDLEY GROUP LIMITED	DY1 4SJ	Dudley	ONBOARD	WV11	Wolverhampton
WILLIAM GIBBONS & SONS,LIMITED	WV13	Wolverhampton	A C STEELS LTD	WS2 7LY	Walsall
WILLIAM GIBBONS GROUP LIMITED	WV13	Wolverhampton	CHICKEN JOES	WS9 8UY	Walsall
BOSECO LIMITED	DY2 8SZ	Dudley	EWS	B66 2PA	Sandwell
MI-KING LIMITED	B70 9DR	Sandwell	HBS FOODS	DY2 9JQ	Dudley
MIDDLETON PAPER COMPANY LIMITED	WS1	Walsall	KEE SAFETY	B64 7DW	Sandwell
CHEMVIIRON CARBON LIMITED	DY4 9AQ	Dudley	HYDROSAVE UK	WS2 7PD	Walsall
UNISTRUT LIMITED	B70 9PL	Sandwell	PURITY SOFT	WS10	Sandwell
CHAMBERLIN PLC	WS1	Walsall	ACL (2002)	B70 8ER	Sandwell
F.A.GILL.LIMITED	WV4	Wolverhampton	NEWBY	WS10	Sandwell
BOSS DESIGN LIMITED	DY2 8SZ	Dudley	FABLINK UK	WV10 7EJ	Wolverhampton
TRIPLEX COMPONENTS (IRON)	DY4 9PA	Sandwell	THE MALVERN	B64 6PW	Sandwell

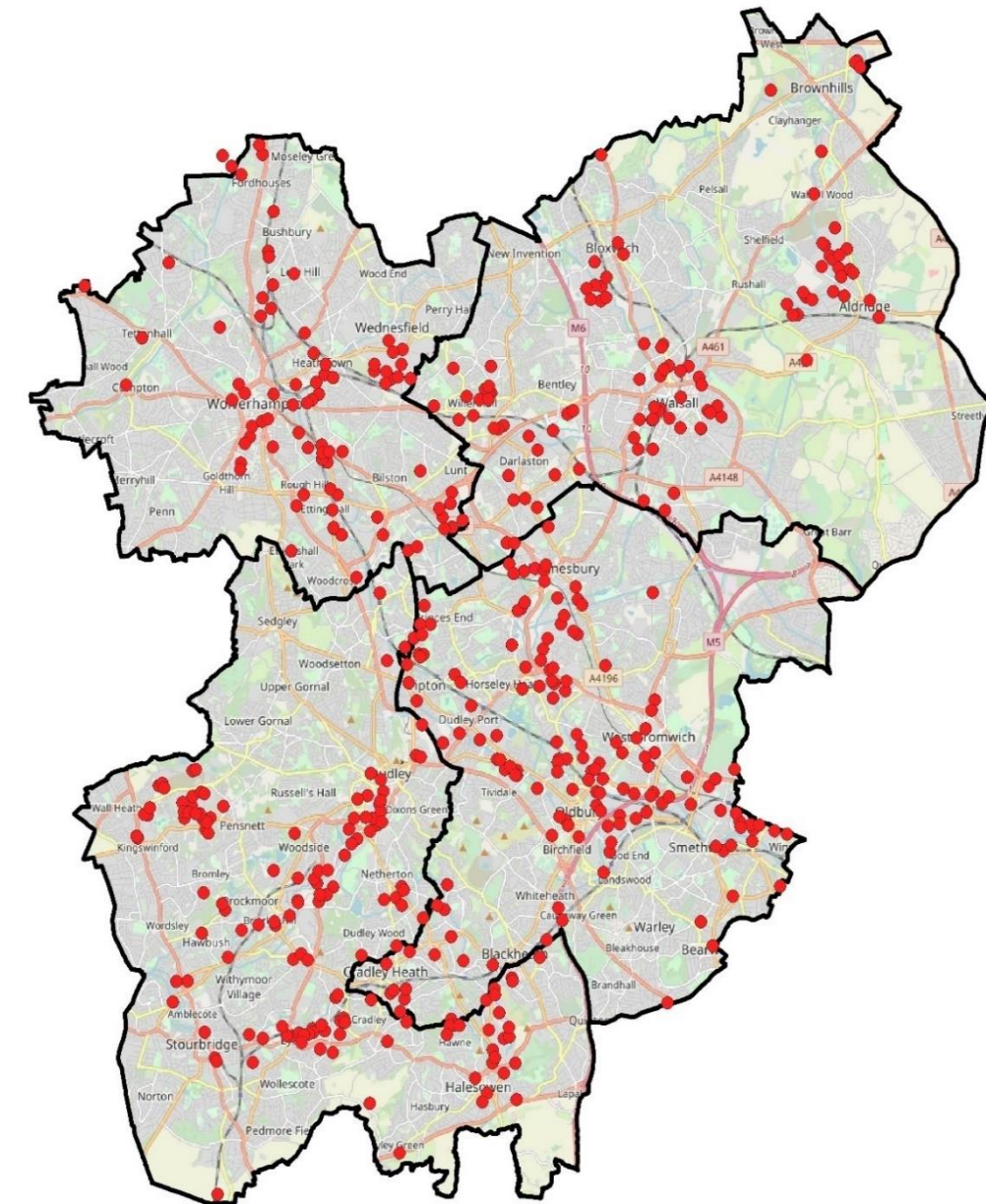
Advanced Manufacturing Apprenticeship Providers

In-Comm Training Services Ltd (Walsall)
 Sandwell College (West Bromwich)
 Nova Training Ltd (Willenhall)
 Dudley College of Technology (Dudley)
 The Apprenticeship Works (Oldbury)
 Walsall College - Wismore Campus (Walsall)
 City of Wolverhampton College (Wolverhampton)
 Mercia Management (Wolverhampton)

Black Country Skills Factory



May-19



Black Country Consortium



Economic Intelligence Unit

© Crown Copyright and database right [2018]. Ordnance Survey [100046698]
 You are not permitted to copy, sub-license, distribute or sell any of this data to third parties in any form

Source: ESFA Live vacancies
 FAME data downloaded in April 2019
 Labour Insight Jobs (Burning Glass Technologies) May 2019
 ONS Business Register and Employment Survey April 2019

